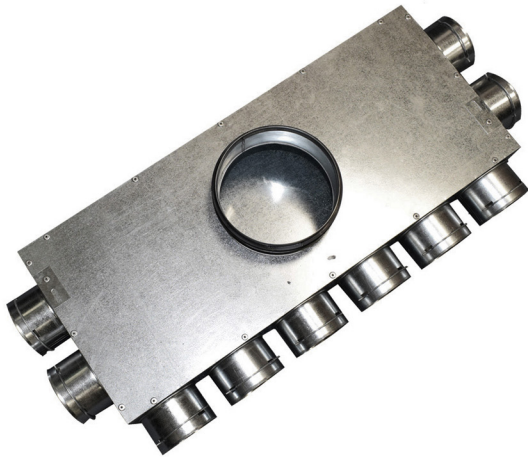


# Quiet-Vent 10 Point Top Entry Distribution Box 150 Spigot (75mm)



**Galvanised steel 10-point distribution box  
10 x 75mm spigots**

**1 x 150mm top entry spigot with sealing  
ring**

**Supplied with 4 blanking caps**

**Recommended installation – secure  
distribution box to ceiling or floor insert  
radial pipe until clips engage with radial  
pipe**

**This distribution box requires sealing  
rings, all unused vents must be covered  
with blanking caps**

