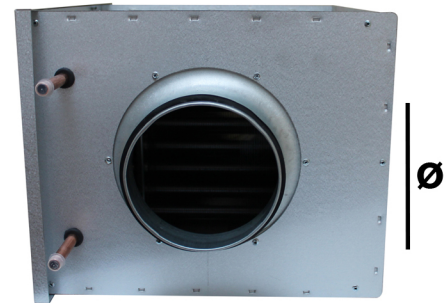
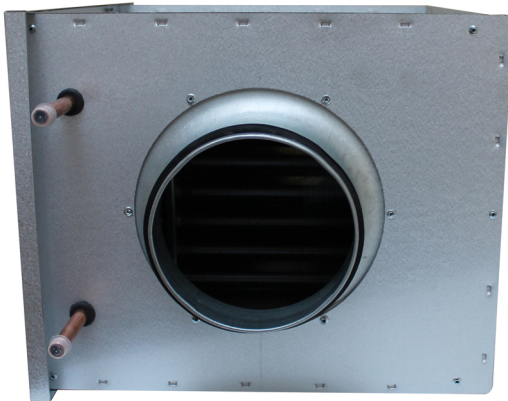


## Quiet-Vent 3 Row Water Duct Cooler



Uses cold water supplied from your existing heat pump and is used for cooling the air in a ventilation system. Options include 3 row duct coolers suitable for 125,160,200,250,315 & 400mm ducting systems

Can also be used for cooling individual rooms or zones.

Features include circular duct connection with rubber seals, openable cover for inspection and cleaning and operation pressure of 1,0 MPa (10 bar)

For controlling the room or supply air temperature, the duct heater can be supplemented with regulators, sensors, actuators, valves and anti-freeze protection at an additional cost

spigot ∅	row	product code
125mm	3	CWC-125-3
160mm	3	CWC-160-3
200mm	3	CWC-200-3
250mm	3	CWC-250-3
315mm	3	CWC-315-3
400mm	3	CWC-400-3