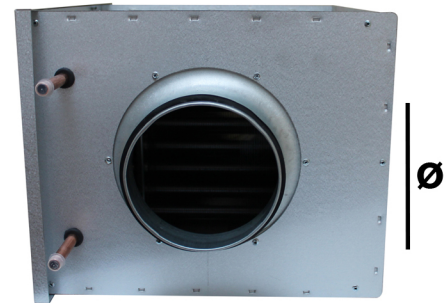
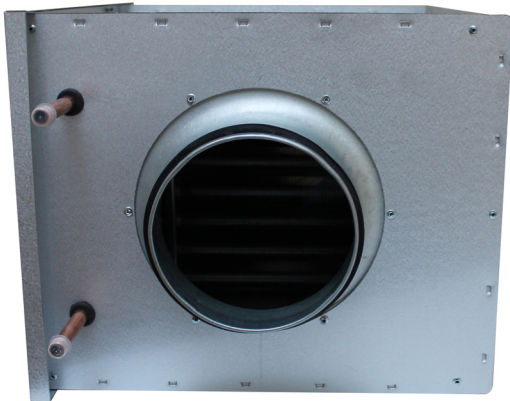


Quiet-Vent 2 or 3 Row Water Duct Heater



Uses hot water as the energy carrier and is used for heating the air in a ventilation system

Options include 2 or 3 row duct heaters, suitable for 125,160,200,250,315 & 400mm ducting systems

Can also be used for heating individual rooms or zones

In correctly designed systems, they can also heat the entire building

For controlling the room or supply air temperature, the duct heater can be supplemented with regulators, sensors, actuators, valves, and anti-freeze protection at an additional cost

spigot \varnothing	row	product code
125mm	2	QV-CWH-125-2
125mm	3	QV-CWH-125-3
160mm	2	QV-CWH-160-2
160mm	3	QV-CWH-160-3
200mm	2	QV-CWH-200-2
200mm	3	QV-CWH-200-3
250mm	3	QV-CWH-250-3
315mm	3	QV-CWH-315-3
400mm	3	QV-CWH-400-3