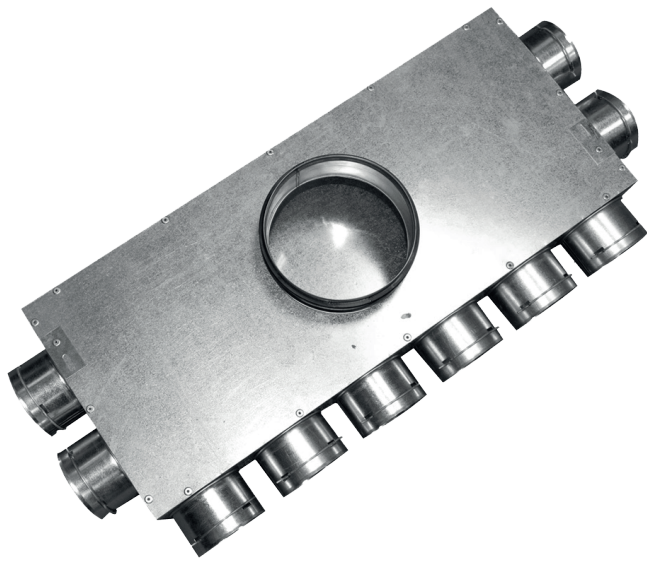


PRODUCT DATASHEET

QV75-10150TE

Quiet-Vent 10-pt 75mm Top Entry Distribution Box - 150mm Spigot



Technical Specification

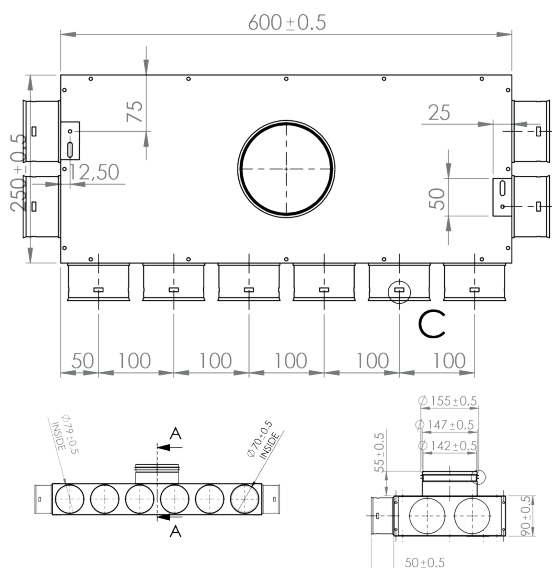
Manufacturer	Quiet-Vent
Part Number	QV75-10150TE
Type	Manifold / Distribution Box
Spigot Size	150mm
Connection	10 x 75mm
Material	Galvanised Steel
Application	Supply / Extract

Product Overview

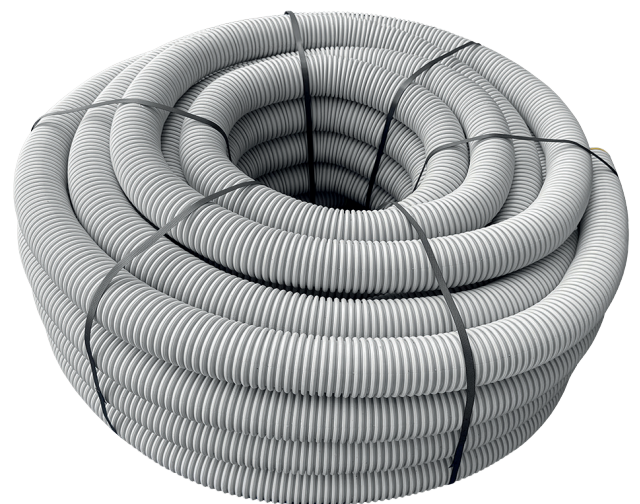
The Quiet-Vent 75mm 10 Point Top Entry Distribution Box is designed to provide efficient airflow distribution from a 150mm spigot connection to up to 10 individual 75mm radial duct runs. Suitable for use within MVHR and mechanical ventilation systems, it supports balanced airflow across larger residential ventilation layouts where multiple room connections are required.

Its top entry design makes it suitable for ceiling or floor installation, offering flexibility where duct routing or service void space may be limited. Supplied with 3 blanking caps, unused outlets can be sealed to help maintain system efficiency and airflow control. The unit requires compatible sealing rings to achieve secure, airtight connections, while its low-profile L600mm x W250mm x H90mm dimensions make it ideal for installations using Quiet-Vent 75mm radial ducting.

Dimensions



Related Products



QV75P-HP
Quiet-Vent 75mm x 50 Metre Antibacterial Radial Pipe