

PRODUCT DATASHEET

QV75-15180RE

Quiet-Vent 15pt 75mm Rear Entry Distribution Box - 180mm Spigot



Technical Specification

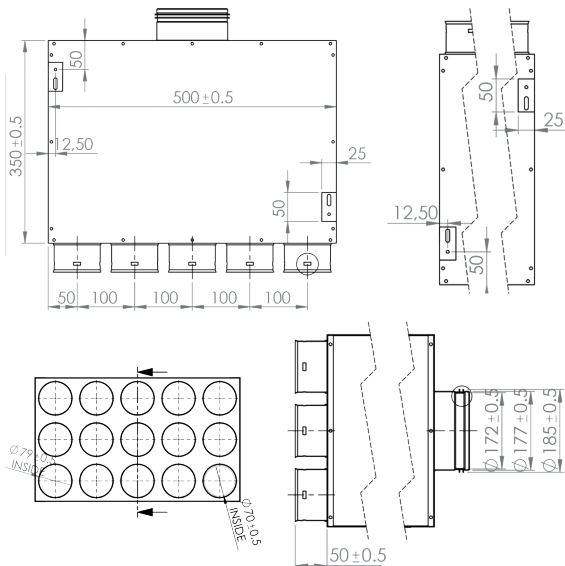
Manufacturer	Quiet-Vent
Part Number	QV75-15180RE
Type	Manifold / Distribution Box
Spigot Size	180mm
Connection	15 x 75mm
Material	Galvanised Steel
Application	Supply / Extract

Product Overview

The Quiet-Vent 75mm 15 Point Rear Entry Distribution Box is designed to provide efficient airflow distribution from a 180mm spigot connection to up to 15 individual 75mm radial duct runs. Suitable for use within MVHR and mechanical ventilation systems, it supports balanced airflow across larger residential ventilation layouts where extensive duct connections are required.

Its rear entry design allows for streamlined duct routing, making it suitable for installation in ceilings, floors, and service voids where multiple connections need to be managed efficiently. Supplied with 4 blanking caps, unused outlets can be sealed to help maintain system efficiency and airflow control. The unit requires compatible sealing rings to achieve secure, airtight connections, while its L500mm x W350mm x H300mm dimensions make it ideal for larger installations using Quiet-Vent 75mm radial ducting.

Dimensions



Flow Rate

