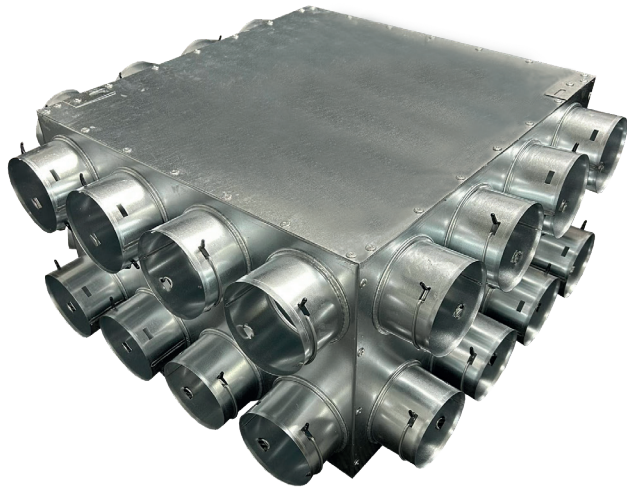


PRODUCT DATASHEET

QV75-24200MTE

Quiet-Vent 24pt Adjustable Distribution Box - 200mm Spigot



Technical Specification

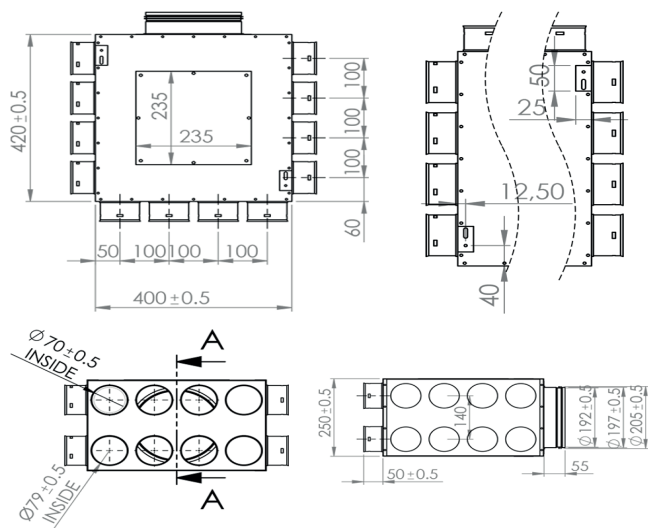
Manufacturer	Quiet-Vent
Part Number	QV75-24200MTE
Type	Manifold / Distribution Box
Spigot Size	200mm
Connection	24x75mm
Material	Galvanised steel
Application	Supply / Extract

Product Overview

The Quiet-Vent 24 Point Adjustable Distribution Box is designed to provide efficient airflow distribution from a 200mm main duct connection to up to 24 individual 75mm radial duct runs. Suitable for use within MVHR and mechanical ventilation systems, it supports consistent and balanced air delivery across larger residential ventilation layouts.

Its adjustable manifold design allows for flexible installation in ceilings, floors, and service voids where duct routing may vary. Supplied with 6 blanking caps, unused outlets can be sealed to help maintain system efficiency and airflow control. The unit integrates seamlessly with Quiet-Vent 75mm radial ducting systems, providing secure and airtight connections when used with compatible sealing rings.

Dimensions



Flow Rate

